



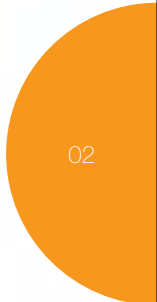
Uniclass L773	EPIC N57
CI/SfB (66.3)	X16 (U47)
20060384	February 2009

# Uni-8<sup>®</sup> Overhead Fall Protection System





# Uni-8® Overhead Fall Protection System



## contents

typical applications	02
components and construction	03
key features and benefits	05
controlled rate descent	06
self retracting lifelines	06
harnesses and lanyards	06

for more information about our range of equipment visit our website at [www.unilinesafety.com](http://www.unilinesafety.com)

## product overview

The Uni-8® Overhead fall protection system was primarily developed to meet the needs of transport and industrial customers including lorries, trains and aircraft, crane walkways and loading bays. The system has also solved access and safety problems in the entertainment and arena industry. This quality safety solution can support heavy fall arrest and controlled rate

descent devices, and ensures free and unhindered movement for the worker when carrying out work at height.

Uni-8® Overhead resolves functionality issues that would be experienced by using a standard horizontal lifeline for such applications and mitigates the difficulties associated with solving fall protection problems in conditions that can often be challenging.





## features and benefits

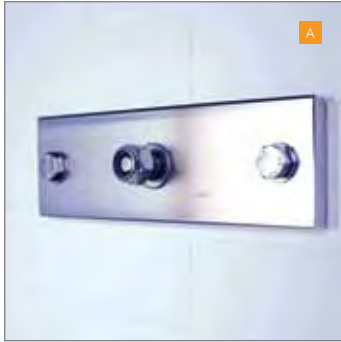
- Free running attachment carriage ensures complete freedom of travel and therefore movement for the user
- Sealed bearings in the carriage wheels reduce the need for maintenance
- High tensioned stainless steel cable supports heavy fall arrest devices when required and reduces cable deflections
- In line energy absorbers reduce load transfer to the structure in the event of a fall
- Available as a single or multi-span system
- Strong intermediate cable supports allow the system to span greater distances for long bay work areas and permit free passage of the attachment carriage
- Electro-polished components provide long-term corrosion resistance\*\*
- Uniline for Windows calculates system performance to ensure all system designs meet customer needs and are safe
- Supports multiple workers up to 140kg
- Tested to EN795 class C and CE Marked and meets the requirements of AS/NZS, OSHA, ANSI and CSA for horizontal lifelines
- Uniline Systems Integrators can provide design and installation of supporting steel structure

complete freedom  
of movement

\*\*some aggressive environments can cause corrosion and discolouration of stainless steel

03





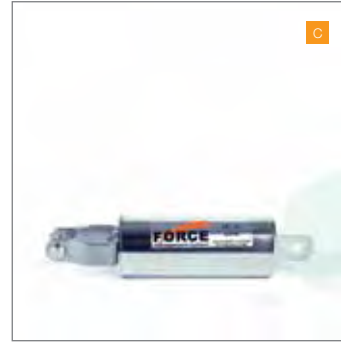
UP0112A

Wall Anchor Plate – 316 stainless steel, electro-polished. 50kN min breaking strength. 2 x M12 fixing holes



UE0100A

Unieye end anchorage connector – 316 stainless steel casting (electro-polished), 100% x-ray & die penetration inspection, 55kN breaking strength, Individual serial numbers for traceability, allows free movement of the system terminations thereby preventing dangerous leverage to the clevis



UA0600

Inline Force Management Energy Absorber – Reduces the energy transferred to the structure as a result of a fall, 316 Stainless Steel (electro-polished)

best for industrial applications where the anchorage point needs to be above the users' head

04

Enables the installer to set and check the correct system pre-tension, 316 stainless steel, safety lock nut and thread viewer



U8T0400-5/0402-5/0405-5

Cable – 1 x 19 316 stainless steel, high degree of stiffness allows free travel of attachment carriage and reduces cable deflections



U80802

Toggle – Terminates the end of the safety system, 316 stainless steel, roll swage, hex swage or swageless variants provide installation flexibility



U8S0401/0403/0406



G

U80408

Intermediate Bracket – 316 stainless steel (electro-polished), pressed and ribbed to provide strength and support for use of heavy fall arrest devices



H

U80412-GB/DE/NL/ ES/FR

System ID Tag – Provides system installation traceability and information on limitations of use.

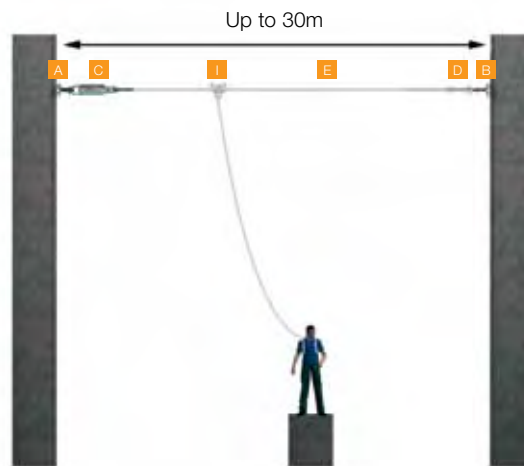


I

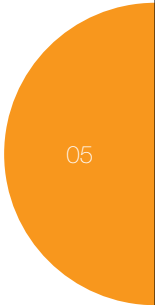
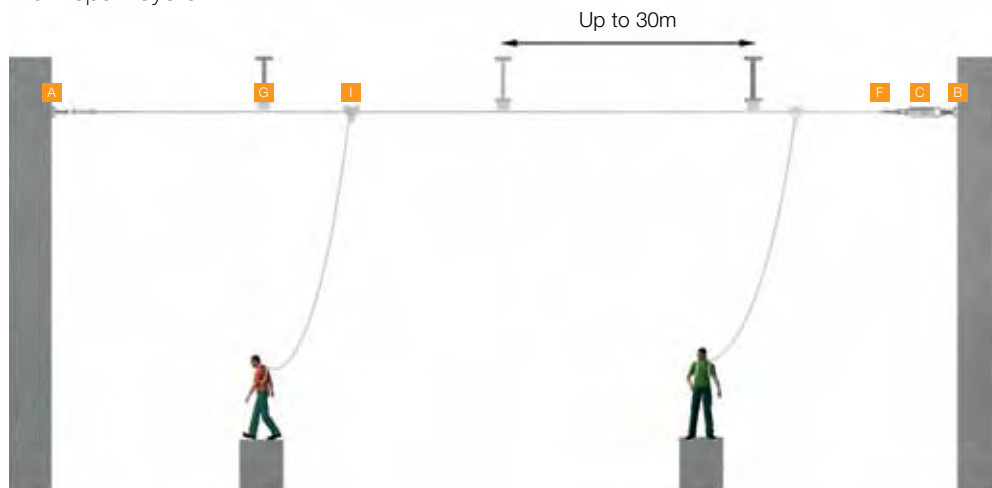
UG0820A

Attachment Carriage – Single user attachment, 17/4PH stainless steel casting – very strong, 100% x-ray and die penetration inspection, electro-polished for long term corrosion resistance, individually serial numbered for traceability, sealed bearings for smooth running and functionality, passes freely over intermediate brackets

example: overhead single span system



example: overhead multi-span system



05



01

## controlled rate descender – URG10 Roll (EN341)

The URG10 Roll controlled rate descent device provides a highly beneficial alternative to a retractable fall arrest block/self retracting lifeline. Instead of arresting the worker in the event of a fall, who would then require rescuing, the URG10-Roll automatically lowers the worker to the ground at a rate of 0.5m/s. The risk of injury to the worker is greatly reduced, as the device does not lock if the worker falls. The worker is not therefore, subjected to dynamic arrest forces and the risk of injury from suspension trauma is mitigated.

It is the perfect solution where rescue may be difficult or where a fallen worker may go unnoticed.

The URG10 Roll should not be used where there is a possibility a worker could be lowered in to a hazardous area which would expose them to further risk.

The device is very robust, requires minimal maintenance and can be left permanently outdoors without fear of degradation\*\*. This adds up to low overall cost of ownership and saves money on rescue training and equipment.



02



03



04



05

## self retracting lifelines (EN360)

Self retracting lifelines or retractable fall arrest blocks as they are also known, are also suitable for use in conjunction with the Uni-8® Overhead System. In the event of a fall the device will lock off, arresting the workers fall and controlling the forces that go into the system and the workers body to a safe limit.

**Only devices approved by Uniline should be used on the Uni-8® Overhead System. This ensures the safety of your workforce, as many devices are not tested in conjunction with cable fall protection systems.**

Your system integrator will advise you further on your equipment selection, including harnesses and training for your personnel for working safely at height.

## harnesses and lanyards (EN361, EN354, EN355)

Uniline also provide a range of harnesses and lanyards for use with our systems. Your system integrator can assist you in making the correct choice.



06

Uniline Safety Systems is a leading international manufacturer of fall protection products and systems. Through a combination of expert knowledge and practical experience, we can help our customers reduce risk and increase safety when working at height.

Uniline's comprehensive range of products offers fully compliant, practical solutions for structures of all types, in all industries. Our ethos of delivering quality, service, training and support for our customers has earned Uniline a deserved reputation for excellence around the world.

Operating through specialist safety companies in over 25 countries, Uniline provides local support and installation services to meet the specific safety objectives of all our customers.



If you need a safety solution for roof access during maintenance and inspection tasks, then look no further than Uniline's RoofSafe product range. Our products, including roof anchors, horizontal lifelines, horizontal rail systems and walkways offer comprehensive protection for workers on all types of roofs.



MultiSafe comprises three of the best known brands in fall protection safety: Uni-8, Uni-16, and UniRail. The versatility of these products combined with Uniline's expertise in fall protection ensures we can solve even the most complex of height safety problems in industry, construction, façade access and for all manner of building maintenance and inspection tasks.



The best vertical fall protection systems in the world won't let you down. The extensive development of the EasyClimber range of products for vertical structures including masts, towers, pylons, wind turbines, silos, bridges and chimney stacks ensures customers will enjoy the safest and most functional climbing experience possible.



A range of intuitive rescue and access products to aid recovery of workers after a fall or in an emergency at height. The diversity of Uniline's Rescue range ensures we can provide a solution for all types of rescue situations whilst keeping safety the top priority.



because lives depend on it

[www.unilinesafety.com](http://www.unilinesafety.com)

local distributor/systems integrator

ROPE ACCESS / RIGGING / HEIGHT SAFETY

**RIGCOM**  
ACCESS

[www.rigcomaccess.com](http://www.rigcomaccess.com)

PO BOX 730  
North Sydney  
NSW 2059

Tel: +61 2 9966 1673  
[admin@rigcomaccess.com](mailto:admin@rigcomaccess.com)

#### Uniline Safety Systems Limited

##### UK

5a Merse Road  
North Moons Moat  
Redditch, Worcestershire  
B98 9HL

t: +44 (0) 1527 548 000  
f: +44 (0) 1527 591 000

##### USA

17200 Chenal Parkway  
Suite #352  
Little Rock, AR 72223  
USA

t: +01 (501) 517 6056  
f: +01 (501) 325 3477

##### AUSTRALIA

P.O. Box 1226  
Surfers Paradise  
Queensland 4217  
Australia

t: +61 (7) 5539 0164  
f: +61 (7) 5570 4208

##### SPAIN

C/Albaracin 6-3D  
11300 La Linea  
Cadiz  
España

t: +34 (856) 125 173  
m: +34 (627) 902 606